



## ROBUS<sub>eco</sub>

Compact, Automated  
Spraycoating – Perfect  
for Mid-Size Companies



### THE FACTS

- **Modular:** spraycoating machine **ROBUS<sub>eco</sub>** with automatic loading and stacking in rack trolleys
- **Efficient:** only one person needed to operate the machine
- **Flexible:** Automation for work piece sizes from 300 - 3000 mm, manual coating of larger, single work pieces possible at any time

### FIELDS OF APPLICATIONS

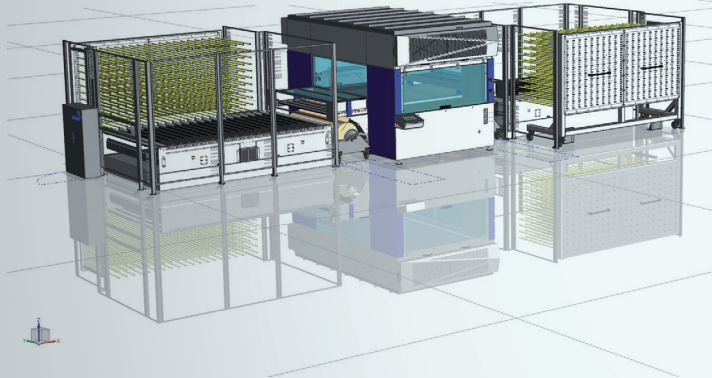
- Base coat and final coating application from different solvent based lacquer systems, water based lacquer and water based staining agents
- Simple and economical automation possible in the case of capacity or staff shortages

### FEATURES AND EQUIPMENT PACKAGES

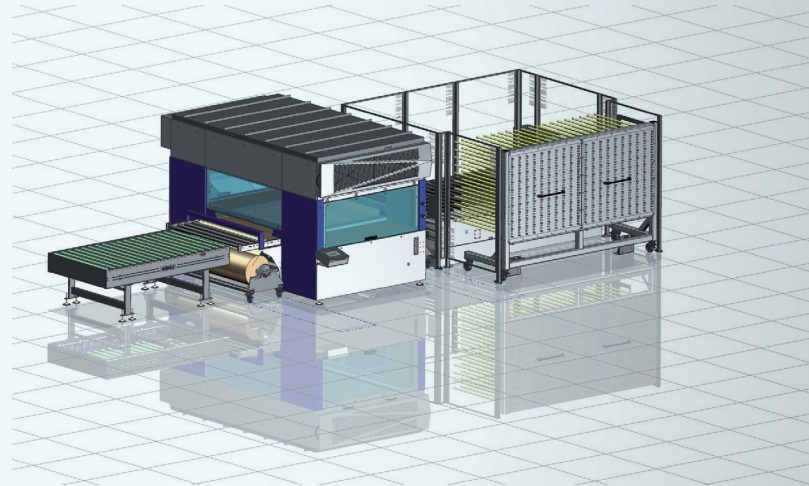
- Spraycoating machine with one-way conveyor belt and vacuum table or PVC conveyor belt with coating recovery system and belt cleaning
- Scanner strip for work piece position recognition
- Simple and understandable controlling of the complete system via the HMI panel
- Optional automated loading and/or stacking

### CONVINCING IN EVERY DETAIL

- Unattended work piece handling from rack trolley to rack trolley, ensures high quality
- Autonomous coating approx. 16 min = ca. 42.9 m<sup>2</sup> coated surface area
- Fully automatic colour wheel switching possible between each level. Freely configurable
- Handling of single work pieces without carrier plate
  - No visible tear-off edge when removing paper
  - No preparation time needed for pallets
- Manual loading for oversized work pieces (> 3m length) possible
- Work piece handling always in the direction of production guarantees greater availability of the coating machine
- Combinable with PVC conveyor belt or paper roll machine
- Special rack trolleys deployable for different products
- Controlled completely via HMI panel on the coating machine
- Extremely compact footprint, approx. 60 m<sup>2</sup>



Spraycoating Machine **ROBUS<sub>eco</sub>**  
With automated loading and stacking



Spray Coating Machine **ROBUS<sub>eco</sub>**  
With automated stacking

### Example of a process cycle:

- 1 Manual placement of work pieces in the rack trolley
- 2 Allocation of colour wheels to the different rack trolley levels
- 3 Automatic collection of the individual batches and supply to the **ROBUS<sub>eco</sub>**
- 4 Collection of the batches and stacking in the rack trolley
- 5 Positioning of full rack trolleys in the drying room

### Simultaneously possible tasks:

- 1 Preparation of additional rack trolleys for a quick trolley swap
- 2 Checking of colours and lacquers
- 3 Colour change on a colour wheel, when this has not been allocated to the rack trolley being produced

#### Technical Data incl. **ROBUS<sub>eco</sub>**

Production quantity	max 42,9 m <sup>2</sup> / rack trolley
Working width	1 300 mm
Feed rate	3 m/min

#### Consumption data

Staff needed	one person incl. preparation for new rack trolley
Space requirement	60m <sup>2</sup> (11m x 5,5 m)
Electrical power supply	13 kW
Rated current	31 A
Extracted volume	8000 m <sup>3</sup> /h
Compressed air consumption:	50 NL/min without guns / 550 NL/min (Aircoat)