



The right accessories for your Z-LASER - products

Accessories for lasers from
the machine vision and
positioning laser product range

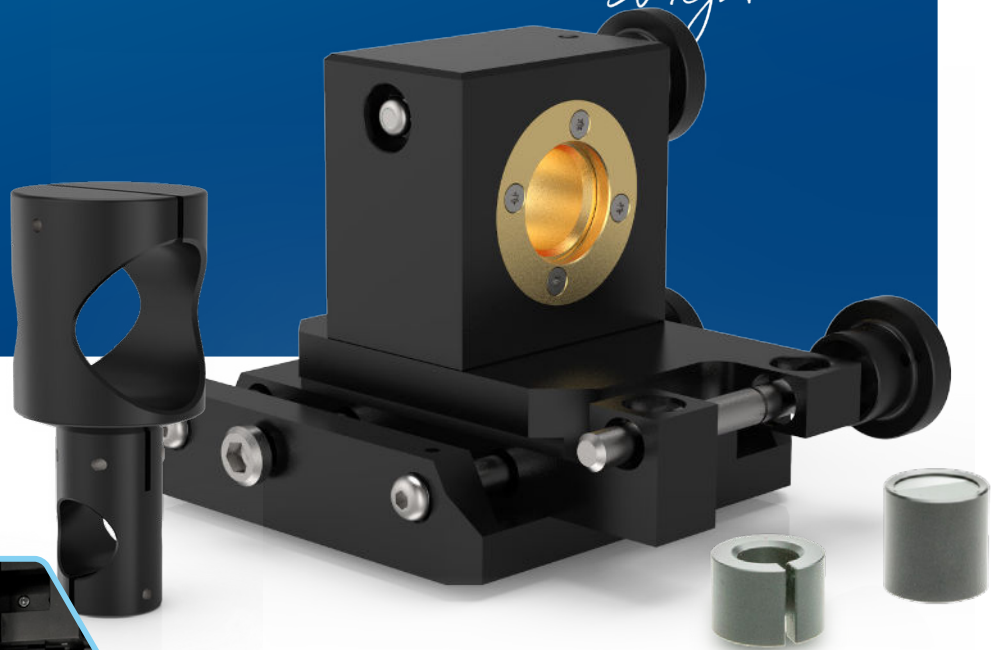
•	Mountings	4
	Precision mountings	5
	Special precision mountings	8
	Aluminum mountings	10
	Plastic mountings	12
	Mounting brackets	17
•	Adapter	13
	Adapter for size adjustments	14
•	Power supplies	18
	Power supplies	19
	Distribution boxes	20
•	Cables	21
	Cables	22
	Adapters	23
	Connectors	23
•	ZQ2 Accessories	24
	Interface adapter cable	24
	Focus locking ring	24
•	Optic Accessories	25
	Dimming caps	26
	Protective caps	26
	Line limiter attachments	26
	Caps with glass pane	26
	Focus locking rings	26
	Target boards	26
•	Optics	28
	Dot matrix	29
	Parallel lines	30
	Crosses	32
	Squares	33
	Dots arranged in a line	34
	Circles	35
	Dots in random pattern	36

Z-LASER accessories

Precisely.
Reliable.
Durable.

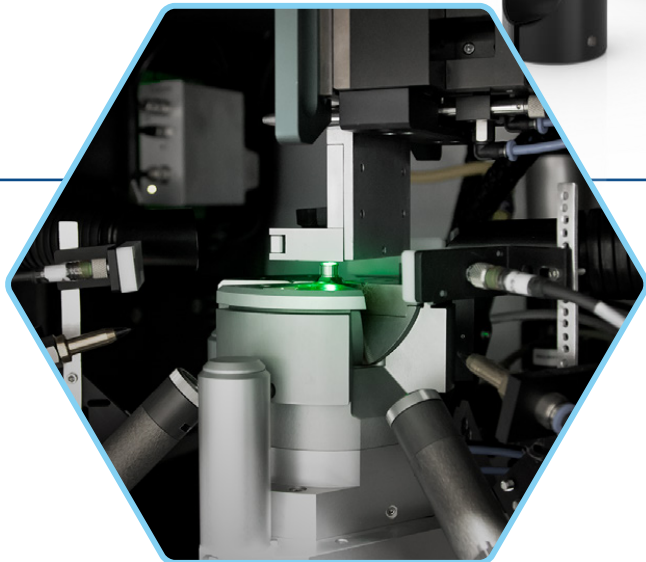
Z-LASER

bright ideas



Highest precision since 1985

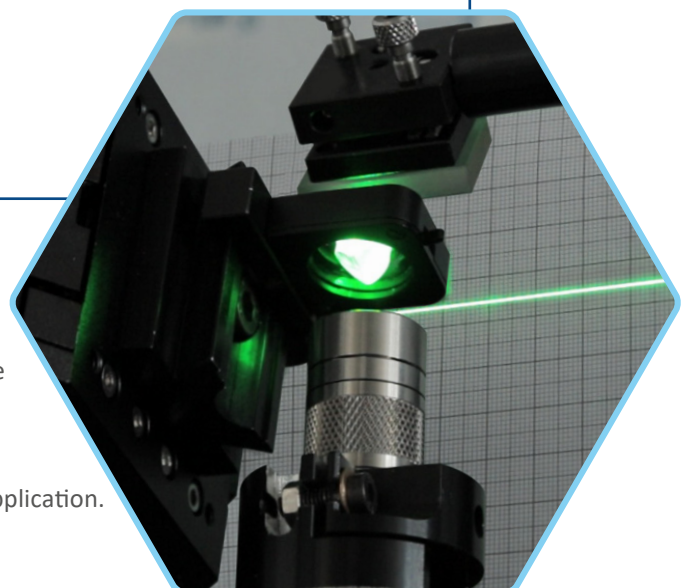
For more than 35 years we have been manufacturing our laser modules with highest precision, for use in rough industrial environments as well as for sensitive applications in laboratories and medical sectors. The focus is always the precise projection of a sharp laser projection at a defined position.



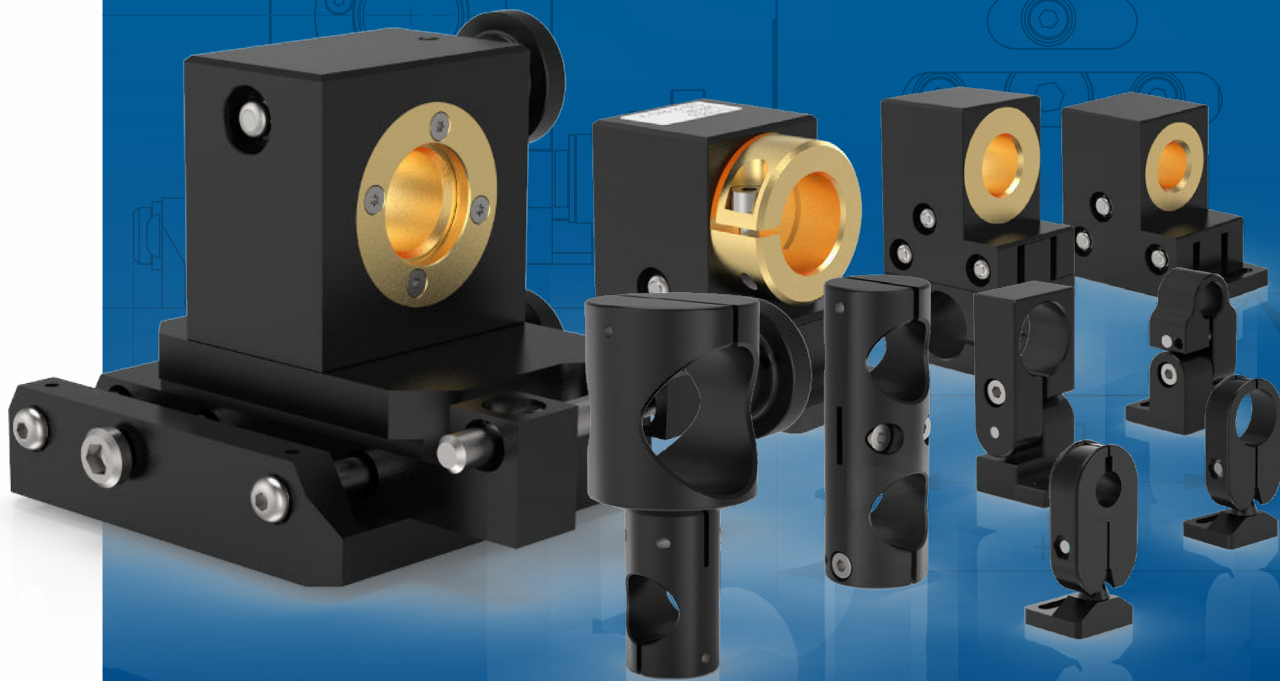
Perfectly adjusted

In addition to the laser module used, the corresponding accessories are decisive for precise and reliable use. The Z-LASER accessories are developed and manufactured according to the same high standards that we use to manufacture our laser modules.

The perfectly matched components offer impressive results and guarantee a long and carefree use of our laser modules in your application.



Mountings

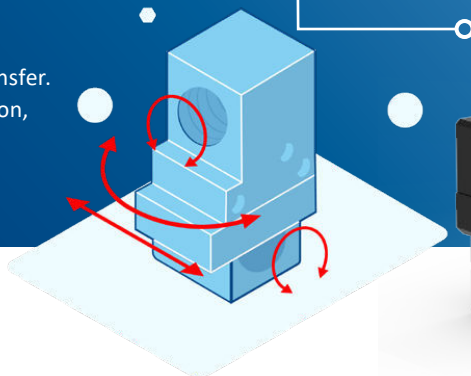


H8 – Precision mounting	5
H6 – Precision mounting	6
HX-11 – Special precision mounting	8
MXYZ – Special precision mounting	8
H0 – Aluminum mounting	10
H2 – Aluminum mounting	11
H3 – Plastic mounting	12


H8

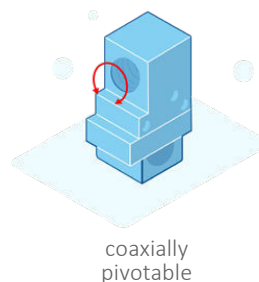
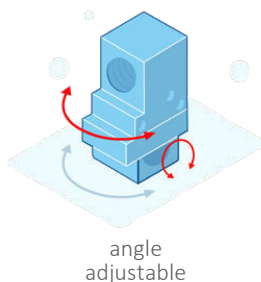
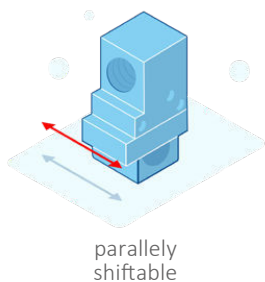
Precision mounting

The aluminum block casing ensures optimal heat transfer. The stainless steel screw set allows for coaxial rotation, angular rotation, and parallel displacement of the laser module.



H8-M18 | Art.-Nr.: 100451600

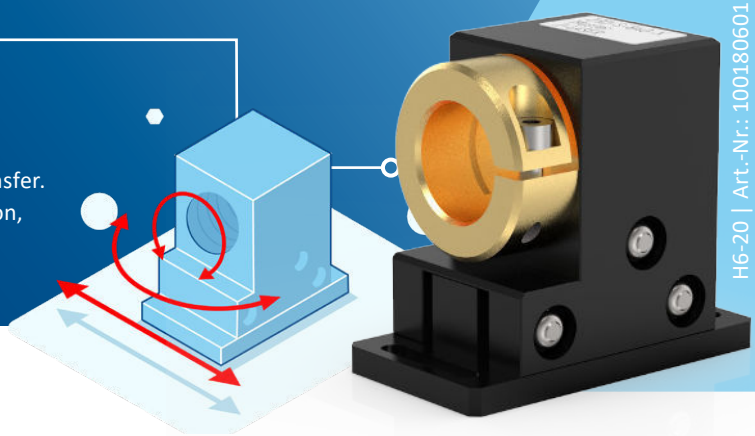
	Product name	Article code	Product description	Compatible with
	H8-20	100180701	Can be mounted on a Ø 20 mm shaft	Laser with Ø 20 mm ZAT ZM18 ZX20
	H8-M18	100451600	Can be mounted on a Ø 20 mm shaft	Laser with M18 external thread ZM18 ZX20



H6

Precision mounting

The aluminum block casing ensures optimal heat transfer. The stainless steel screw set allows for coaxial rotation, angular rotation, and parallel displacement of the laser module.



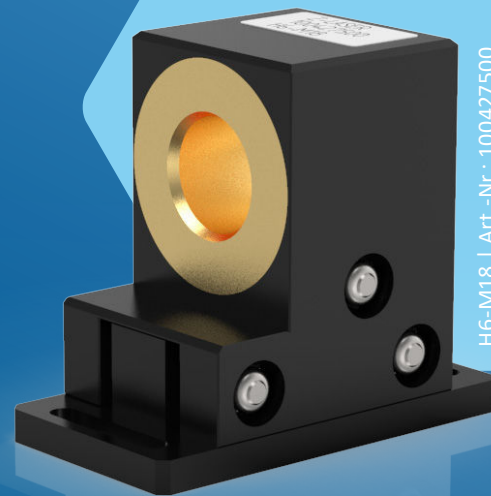
	Product name	Article code	Product description	Compatible with
	H6-20	100180601	With slot for mounting	Laser with Ø 20 mm ZAT ZM18 ZX20
	H6-M18	100427500	With slot for mounting	Laser with M18 external thread ZM18 ZX20
	H6-M12	100488900	With slot for mounting	Laser with M12 external thread ZM12
	H6-40	100243602	With slot for mounting	Laser with Ø 40 mm ZPT-F ZR ZRG-F

Precision mounting H6-M18 for laser modules with an M18 thread

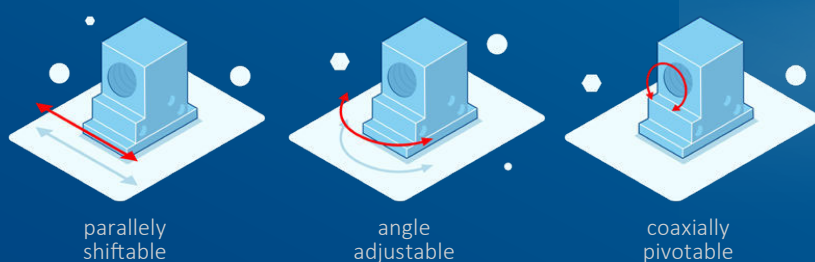
This aluminum precision mount is suitable for all laser modules with an M18 thread. The aluminum block casing ensures optimal heat transfer.

The stainless steel screw set allows for coaxial rotation, angular rotation, and parallel displacement of the laser module.

Also available for lasers with a diameter of $\varnothing 12$ mm (M12), $\varnothing 20$ mm, or $\varnothing 40$ mm.



H6-M18 | Art.-Nr.: 100427500



parallelly shiftable

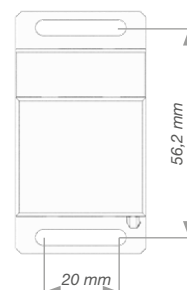
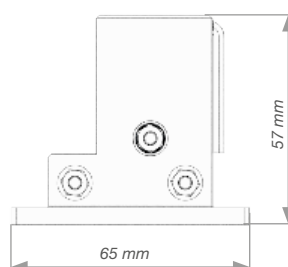
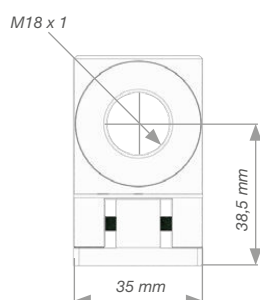
angle adjustable

coaxially pivotable

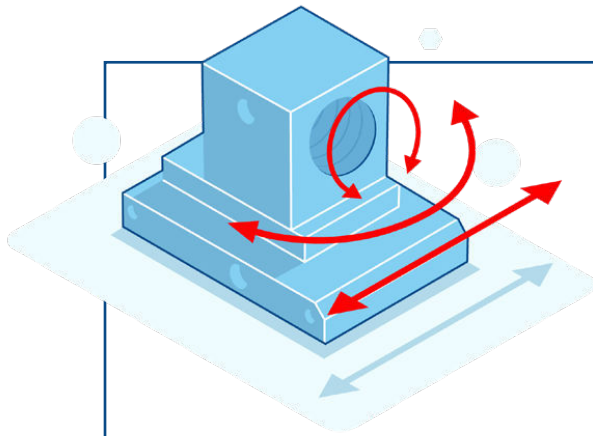
- Aluminum mounting for all ZM18 lasers
- coaxially pivotable
- angle adjustable
- parallelly shiftable
- maintenance-free
- self-locking

Specifications

Body	65mm x 35mm x 57mm (L, W, H)
Material	Anodised aluminum



Special precision mountings



Product name

Article code

Product description

Compatible with

HX-11

HX-11-K

Material: PVC
Precision disc-spring mount

Laser with Ø 11 mm
ZD
ZF-peF

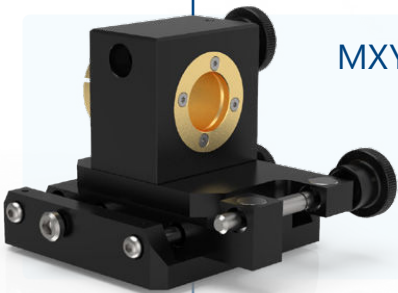


MXYZ-20

MXYZ-20B

Mount can be turned by 20°,
parallel shiftable by 20 mm,
maintenance-free, backlash-
free, self-locking

Laser with Ø 20 mm
ZAT
ZM18
ZX20

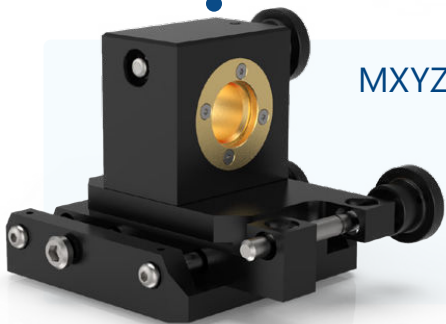


MXYZ-M18

MXYZ-M18

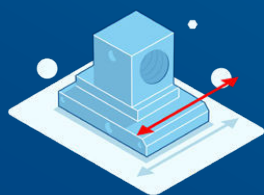
Mount can be turned by 20°,
parallel shiftable by 20 mm,
maintenance-free, backlash-
free, self-locking

Laser with
M18 external thread
ZM18
ZX20

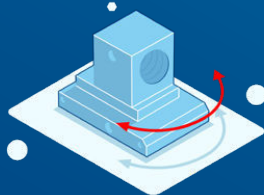


Precision mounting MXYZ-M18 for laser modules with an M18 thread

The precision mounting can be adjusted in 3 axes. The base plate of the assembly has 4 threaded holes through which the mounting bracket can be installed.



parallelly
shiftable

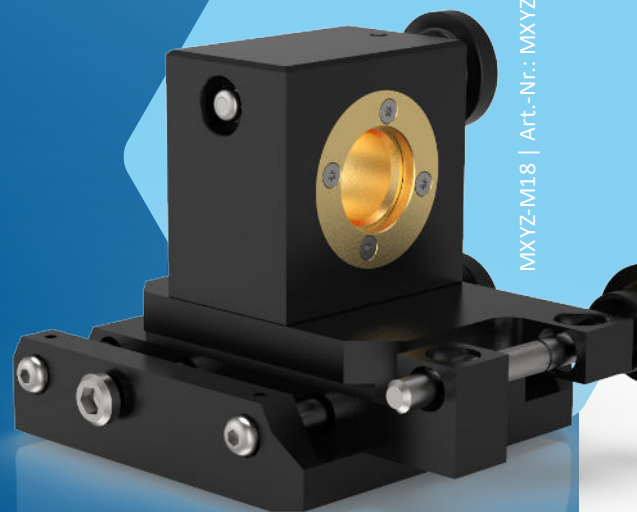


angle
adjustable



coaxially
pivotable

- Aluminum mounting for all ZM18-Laser
- coaxially pivotable, 360°
- angle adjustable up to 20°
- parallelly shiftable up to 20 mm
- maintance-free
- backlash-free and self-locking



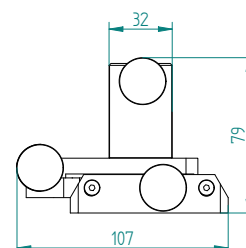
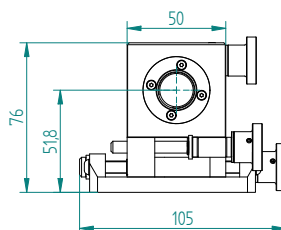
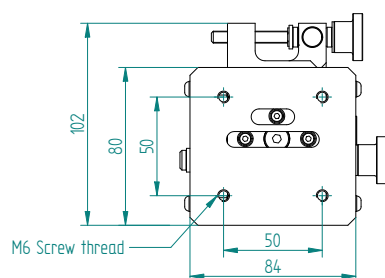
MXYZ-M18 | Art.-Nr.: MXYZ-20B

Specifications

Body 105mm x 107mm x 79mm (L, W, H)

Material Anodised aluminum

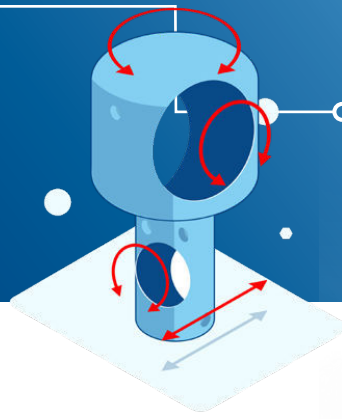
Technical specifications	Symbol	Unit	Min	Typ	Max
Length	l	mm	104,5	105	105,5
Wide	w	mm	106,5	107	107,5
High	h	mm	78,5	79	79,5
Axial angle	α	°		360	
Parallel adjustment	x	mm		+/- 9	
Tilt angle	ϕ	°		+/- 8	
Angle of the positioning accuracy		mrad		0,5	
Parallel positioning accuracy		mm		0,1	
Positioning accuracy		mrad		0,5	



H0

Aluminum mounting

The aluminum block casing ensures optimal heat transfer.
The H0-20 mounting can also be adapted to other diameter lasers by way of adaptors.



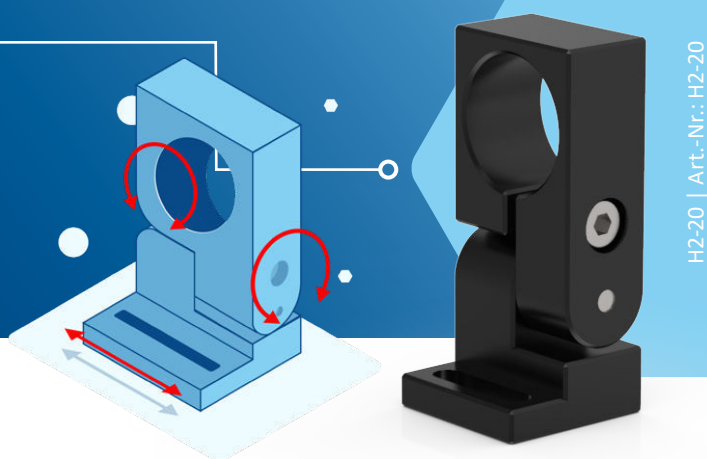
H0-40-20 | Art.-Nr.: 100182500

	Product name	Article code	Product description	Compatible with
	H0-20-20	100182200	Can be mounted on a Ø 20 mm shaft	Laser with Ø 20 mm ZAT ZM18
	H0-11-20	100322100	Combi package: mount + adapter: Mount: H0-20-20, aluminum, horizontally rotatable, Ø 20 mm Adapter: AP-11-0 with Ø 11 mm	Laser with Ø 11 mm ZD ZF-pe-F
	H0-14-20	100322200	Combi package: mount + adapter: Mount: H0-20-20, aluminum, horizontally rotatable, Ø 20 mm Adapter: AP-14-0 with Ø 14 mm	Laser with Ø 14 mm ZT
	H0-40-20	100182500	Can be mounted on a Ø 20 mm shaft	Laser with Ø 40 mm ZPT-F ZR ZRG-F

H2

Aluminum mounting

The aluminum mounting can be tilted 60° and is suitable for different laser modules. The aluminum housing ensures optimum heat dissipation.



	Product name	Article code	Product description	Compatible with
	H2-20	H2-20	With slot for mounting	Laser with Ø 20 mm ZAT ZM18 ZX20
	H2-M12	H2-M12	With slot for mounting and M12 thread	Laser with M12 external thread ZM12
	H2-11M	H2-11M	With slot for mounting	Laser with Ø 11 mm ZD ZF-pe-F
	H2-11	H2-11	Combi package: mount + adapter: Mount: H2-20, aluminum, tiltable, Ø 20 mm Adapter: AP-11 with Ø 11 mm	Laser with Ø 11 mm ZD ZF-pe-F
	H2-14	H2-14	Combi package: mount + adapter: Mount: H2-20, aluminum, tiltable, Ø 20 mm Adapter: AP-14 with Ø 14 mm	Laser with Ø 14 mm ZT
	H2-40	H2-40	With slot for mounting	Laser with Ø 40 mm ZPT-F ZR ZRG-F

H3

Plastic mounting

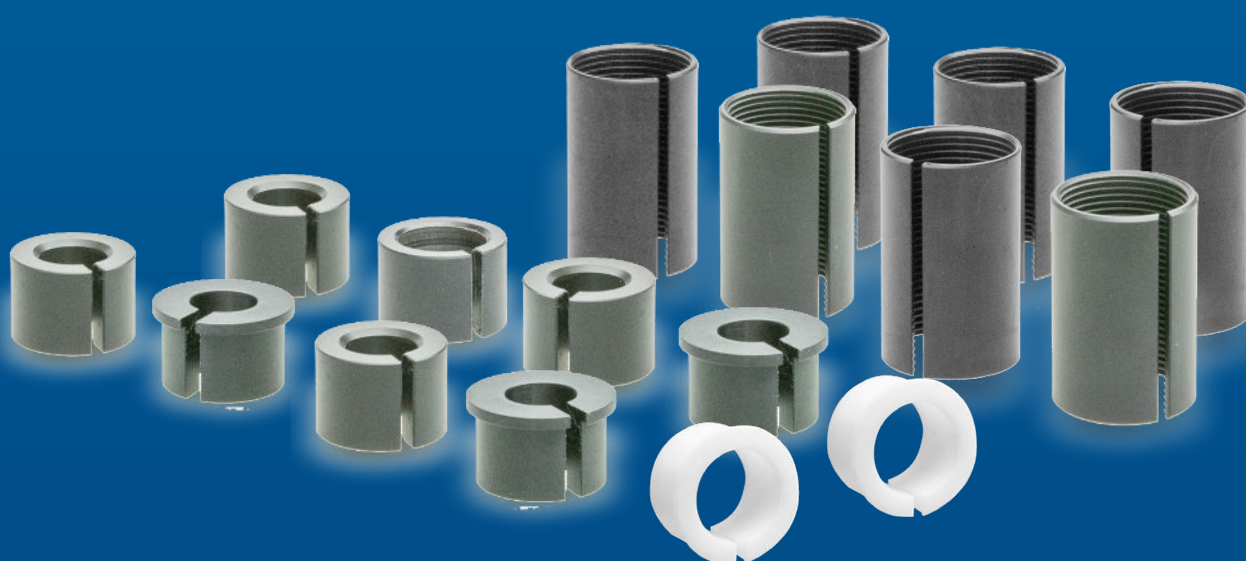
The plastic mount with ball head for various laser modules can be tilted and rotated by up to 180°.



H3-20 | Art.-Nr.: H3-20

	Product name	Article code	Product description	Compatible with
	H3-20	H3-20	Plastic, with ball head and slot for mounting	Laser with Ø 20 mm ZAT ZM18 ZX20
	H3-M18	H3-M18	Plastic, with ball joint, M18 thread mount	Laser with M18 external thread ZM18 ZX20
	H3-M12	H3-M12	Plastic, with ball joint, M12 thread mount	Laser with M12 external thread ZM12
	H3-11	H3-11	Combi package: mount + adapter: Mount: H3-20, plastic, with ball head, Ø 20 mm, with slot for mounting Adapter: AP-11 with Ø 11 mm	Laser with Ø 11 mm ZD ZF-pe-F
	H3-14	H3-14	Combi package: mount + adapter: Mount: H3-20, plastic, with ball head, Ø 20 mm, with slot for mounting Adapter: AP-14 with Ø 14 mm	Laser with Ø 14 mm ZT

Adapters



Adapters for size adjustments	14
Adapters for size adjustments	15

Adapters for size adjustments

	Product name	Article code	Product description	Compatible with
	AP-11-0	100248700	Reduction ring for mounts	H0, H6 and H8 from Ø 20 mm to Ø 11 mm
	AP-14-0	100248800	Reduction ring for mounts	H0, H6 and H8 from Ø 20 mm to Ø 14 mm
	AP-11	AP11	Reduction ring for mounts, with attachment flange	H2 and H3 from Ø 20 mm to Ø 11 mm
	AP-14	AP14	Reduction ring for mounts, with attachment flange	H2 and H3 from Ø 20 mm to Ø 14 mm
	AP-40	AP40	Reduction ring for mounts, with attachment flange	from Ø 55 mm to Ø 40 mm



Product name

Article code

Product description

Compatible with

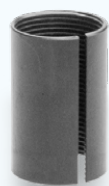


AP-M18-20

100568102

Thread adapter from
M18 thread to \varnothing 20 mm

Laser with
M18 external thread
ZM18
ZX20



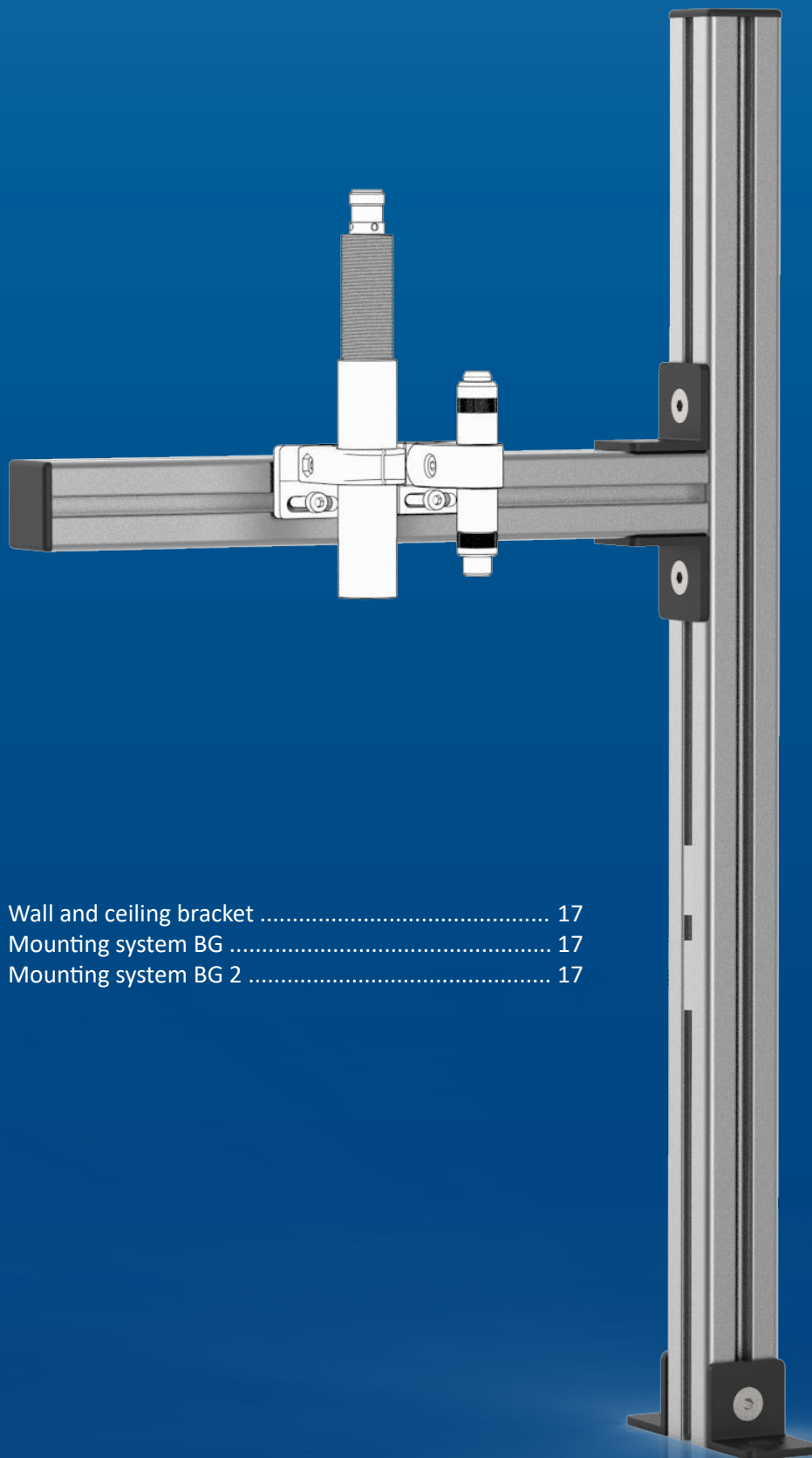
AP-M18-19

100568150

Thread adapter from
M18 thread to \varnothing 19 mm,
for mounts with \varnothing 19 mm

Laser with
M18 external thread
ZM18
ZX20

Mounting brackets



Wall and ceiling bracket	17
Mounting system BG	17
Mounting system BG 2	17

Special mountings

Product name

Article code

Product description

Compatible with

Wall and ceiling mount

BD

Wall and ceiling mount. Consists of ceiling flange, aluminum tubes (\varnothing 40 mm x 1,000 mm), stainless steel cross bar (\varnothing 20 mm x 500 mm), and connector

H0-40-20
H0-20-20

Mounting system

BG

Consists of 2 aluminum profiles (500 mm x 30 mm x 30 mm / 250 mm x 30 mm x 30 mm) and fastening material

H2, H3

Mounting system 2

BG2

Consists of 2 aluminum profiles (500 mm x 30 mm x 30 mm / 250 mm x 30 mm x 30 mm) and fastening material,
with additional table clamp

H2, H3

Power supplies



Power supplies with circular connector	19
Power supplies with Texas socket	19
Power supplies with Texas plug	19
Battery pack 18V	20
Power supplies for DIN rail	20
Distribution boxes	20

Power supplies

	Product name	Article code	Product description	Compatible with
	Power supply with M12 circular connector	WPS-5-M12	Power supply with M12 circular connector, 5 VDC output voltage, for Europe and US/Japan plugs	ZM12 ZM18
	Power supply with M12 circular connector	WPS-9-M12	Power supply with M12 circular connector, 9 VDC output voltage, with Europe and US/Japan plugs	ZM12 ZM18 ZX20
	Power supply with Texas socket	WPSB-3.5	Power supply with Texas socket, 3.5 VDC output voltage, with Europe and US/Japan plugs	ZD-rot ZF-pe-F ZT
	Power supply with Texas socket	WPSB-5.0	Power supply with Texas socket, 5 VDC output voltage, with Europe and US/Japan plugs	ZD-grün
	Power supply with Texas plug	WPS-3.5	Power supply with Texas plug, 3.5 VDC output voltage, with Europe and US/Japan plugs	VB4 for ZD-red ZF-pe-F ZT
	Power supply with Texas plug	WPS-5.0	Power supply with Texas plug, 5 VDC output voltage, with Europe and US/Japan plugs	VB4 for ZD-green ZF-pe-F ZT



Adapters & Circular Connectors
can be found on page 23.

Cables & Accessories | 23

Power supplies & distribution boxes

Product name	Article code	Product description	Compatible with
--------------	--------------	---------------------	-----------------



Battery pack 18 V

100453110

Battery pack with 18 V output voltage, operated by 2pcs Eblock 9 V batteries, with M12 plug

ZM12
ZM18
ZX20



NG-C-W-24M

100368500

Power supply for DIN rail in control cabinet with 24 VDC output voltage

ZD-24
ZM12
ZM18



NG-C-W-5M

100368400

Power supply for DIN rail in control cabinet with 5 VDC output voltage

ZD
ZM12
ZM18



Distribution box

VB4

Distribution box for connecting up to 4pcs ZD, ZF or ZT lasers to a WPS-3.5 or WPS-5.0 power supply

ZB
ZD
ZF-pe-F
ZT



Distribution box M12

VB4-M12

Distribution box for connecting up to 4pcs separately switchable ZM18 or ZM12 lasers to a WPS-5-M12 power supply

ZM12
ZM18

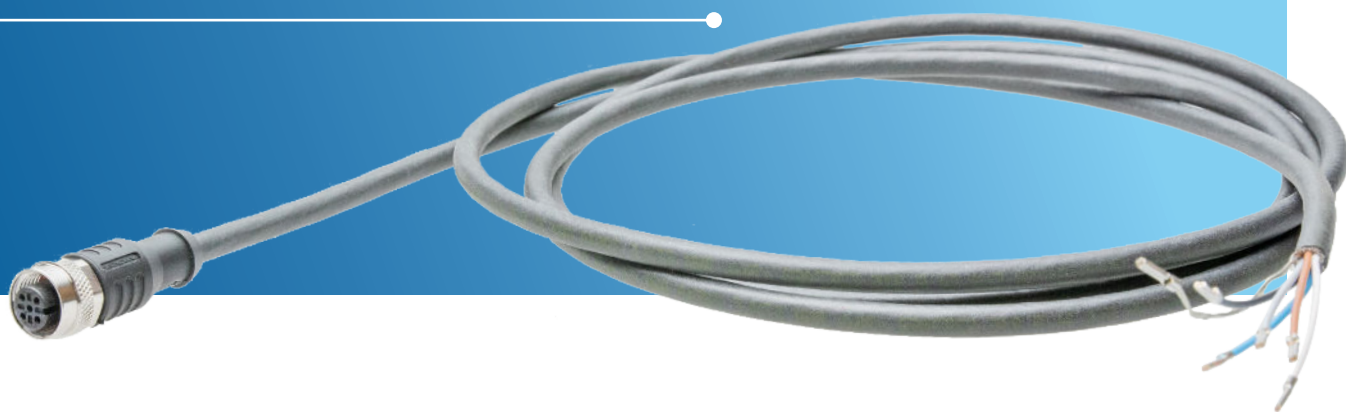
Cables



- Cables, 4-wire 22
- Cables, 5-wire 22
- Cables, 8-wire 22
- Extension cable 23
- USB cable 23
- Plug adapters 23
- Circular adapters 23

Cables & Accessories

	Product name	Article code	Product description	Compatible with
	KB4-2m	100499400	2 m / 5 m	ZM12
	KB4-5m	100499300	connection cable with screw cap, straight, 4-wire	ZM18
	KB4w-2m	100499420	2 m / 5 m	ZM12
	KB4w-5m	100499320	connection cable with screw cap, angled, 4-wire	ZM18
	KB4g-2m	100499461	2 m / 5 m / 10 m / 25 m	ZM12
	KB4g-5m	100499302	Shielded connection cable (shield not attached), with screw cap, straight, 4-wire	ZM18
	KB4g-10m	100499452		
	KB4g-25m	100499307		
	KB8g-2m	100499496	2 m / 5 m / 10 m	ZQ1
	KB8g-5m	100499335	Shielded connection cable (shield not attached) with screw cap, straight, 8-wire	
	KB8g-10m	100499454		
	KB5g-2m	100499491	2 m / 5 m / 10 m / 25 m	ZX20
	KB5g-5m	100499325	Shielded connection cable (shield not attached), with screw cap, straight, 5-wire	ZQ1
	KB5g-10m	100499453		
	KB5g-25m	100499308		
	KB5w-2m	100499492	2 m / 5 m	ZX20
	KB5w-5m	100499326	connection cable with screw cap, angled, 5-wire	ZQ1



Product name

Article code

Product description

Compatible with

Extension cable,
2 m

VKABEL2M

Extension cable with Texas
plug and socket, 2 m

ZD
ZF-pe-F
ZT

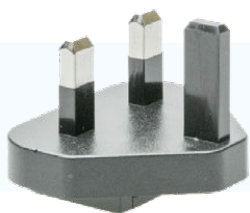


Plug adapter UK

100247510

For WPS power supplies,
specially for **Great Britain**

WPS
WPSB



Plug adapter AU

100247530

For WPS power supplies,
specially for **Australia**

WPS
WPSB



ZX20-USB cable

101243600

2 m cable for connecting a
ZX20 to a PC

ZX20



Circular connector

Z24GERADE

4-pole circular connector
(female) M12,
with screw cap,
straight

ZM12
ZM18
ZX20



Circular connector

Z24WINKEL

4-pole circular connector
(female) M12,
with screw cap,
angled

ZM12
ZM18
ZX20



Accessories for the ZQ2

The ZQ2 laser series was designed for surveying that requires strong, bright lines with IR wavelengths. Here you will find the right accessories.



Product name

Article code

Product description

Compatible with

Interface adapter
cable for ZQ2

100940220

Interface adapter cable for
ZQ2

ZQ2



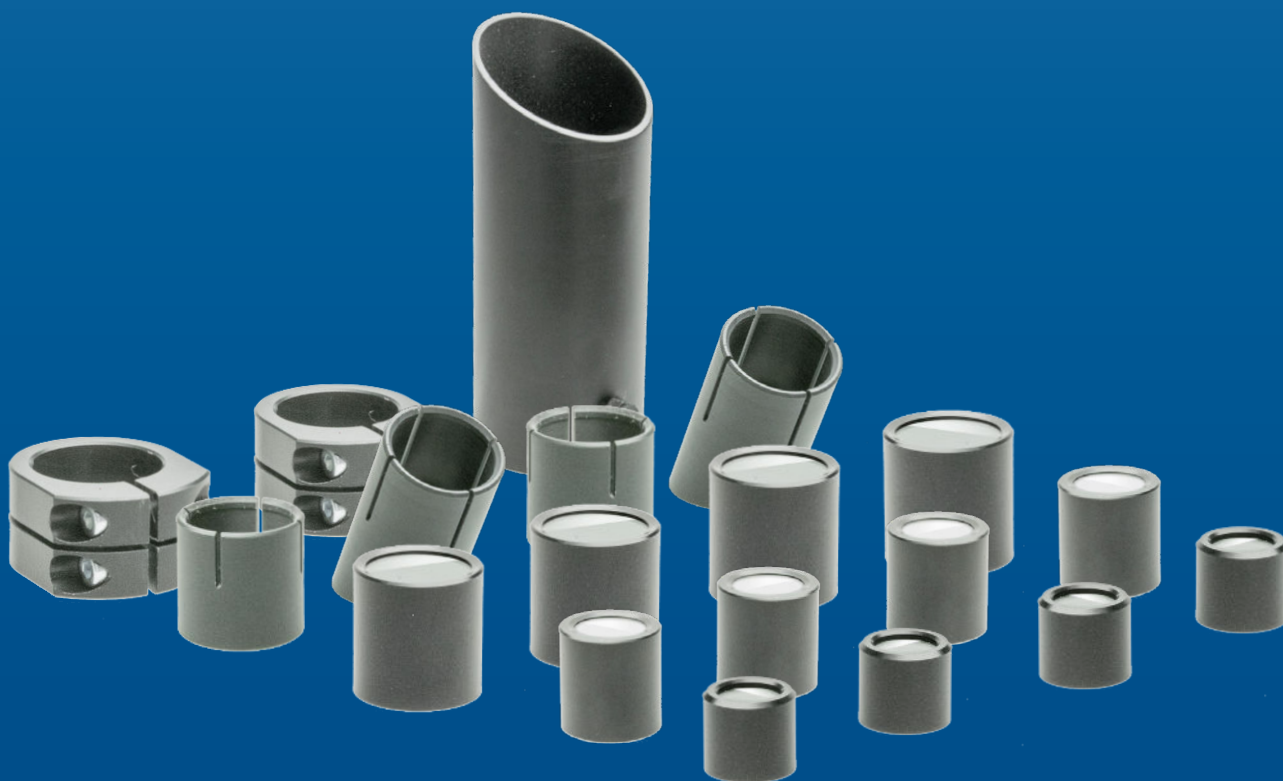
Focus locking ring
ZQ2

100988100

Locks the focus ring

ZQ2

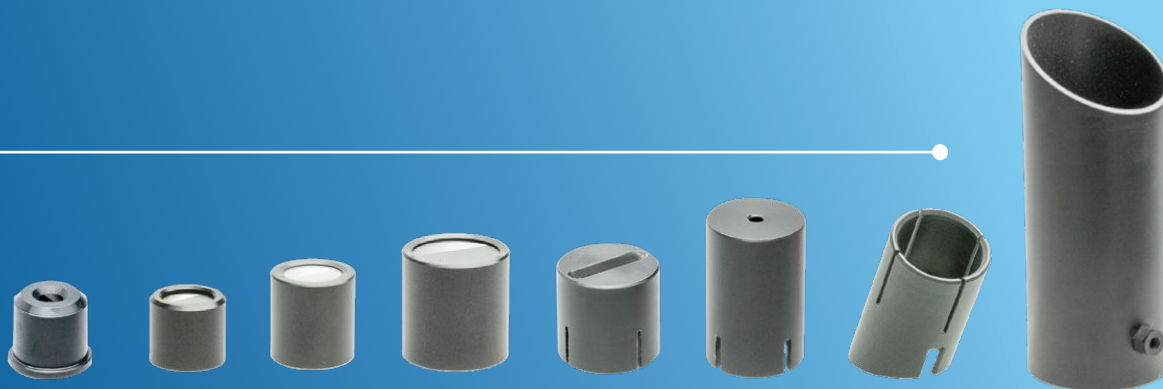
Optical accessories



Dimming caps	26
Protective caps	26
Line limiters	26
Optic heads	27
Focus locking ring	27
Target boards	27

Optical accessories

	Product name	Article code	Product description	Compatible with
	Dimming cap	AK20	Dimming cap, for reducing the laser line	Laser with Ø 20 mm
	Dimming cap bevelled	100620600	Dimming cap bevelled, for reducing the laser line	Laser with Ø 20 mm
	Protective cap IP67 with glass insert	100666600	Protective cap IP67 with glass insert, waterproof and dustproof	Laser with Ø 20 mm
	Dimming cap bevelled	AK40	Dimming cap bevelled, for reducing the laser line	Laser with Ø 40 mm
	Line limiter attachment LB11	LB11	For reducing the line length	Laser with Ø 11 mm
	Line limiter attachment LB20	100525702	For reducing the line length (approximately 11° to 84° fan angle)	Laser with Ø 20 mm



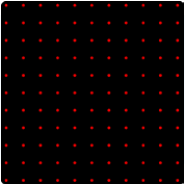
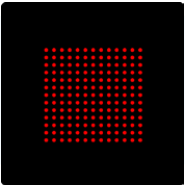
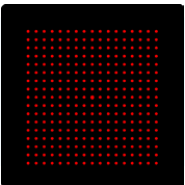
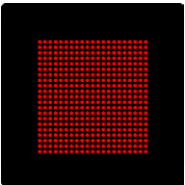
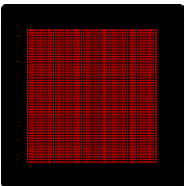
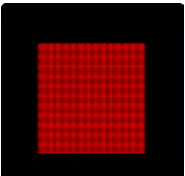
	Product name	Article code	Product description	Compatible with
	ZM18 cap	100507500	Cap for M18 laser with 400-700 nm Wavelength with anti-glare glass pane (spare part!)	ZM18
	ZX20 cap	101078001	Cap for ZX20 laser with 400-700 nm wavelength with anti-glare glass pane (spare part!)	ZX20
	ZM12 cap	100848300	Cap for M12 laser with 400-700 nm wavelength with anti-glare glass pane (spare part!)	ZM12
	Optic head OK	ZTP, ZTL, ZTLP, ZTX5, ZTX30, ZTX60	Replaceable optic head for ZT: Dot, line, line with dot, small cross, large cross	ZT laser
	Focus locking ring ZM18	100637700	Locks the focus ring	ZM18 ZX20
	Target board RED	Z290500	Magnetic target board (red) made from transparent plastic with target, cm and inch scale	Red dot, cross or line laser
	Target board GREEN	Z290501	Magnetic target board (green) made from transparent plastic with target, cm and inch scale	Green dot, cross or line laser

Optics



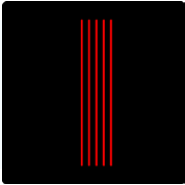
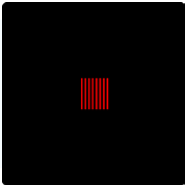
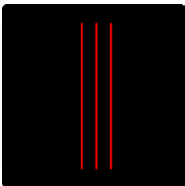
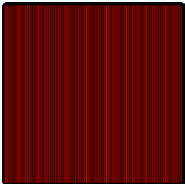
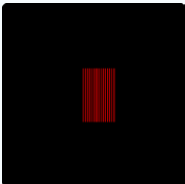

Dot matrixes	29
Parallel lines	30
Crosses	32
Squares	33
Dots arranged in a line	34
Circles	35
Dots in random pattern	36
Laser targeting goggles	37

Dot matrixes

	Product name	Article code	Product description	Compatible with
	2x2+1 dot matrix	2x2+1p	2x2+1 dot matrix Angle: 16.1°x16.1° @ 635 nm Projection size in 100 mm: 28 x 28 mm	ZM12 ZM18 ZX20
	17x17 dot matrix	17x17p14	17x17 dot matrix Angle: 14.6°x14.6° @ 635 nm Projection size in 100 mm: 26 x 26 mm	ZM12 ZM18 ZX20
	11x11 dot matrix	11x11p28	11x11 dot matrix Angle: 28°x28° @ 635 nm Projection size in 100 mm: 50 x 50 mm	ZM12 ZM18 ZX20
	13x13 dot matrix	13x13p4	13x13 dot matrix Angle: 4°x4° @ 635 nm Projection size in 100 mm: 7 x 7 mm	ZM12 ZM18 ZX20
	17x17 dot matrix	17x17p5	17x17 dot matrix Angle: 5°x5° @ 635 nm Projection size in 100 mm: 9 x 9 mm	ZM12 ZM18 ZX20
	21x21 dot matrix	21x21p5	21x21 dot matrix Angle: 5°x5° @ 635 nm Projection size in 100 mm: 9 x 9 mm	ZM12 ZM18 ZX20
	16x16 dot matrix	16x16p5	16x16 dot matrix Angle: 5°x5° @ 635 nm Projection size in 100 mm: 9 x 9 mm	ZM12 ZM18 ZX20
	51x51 dot matrix	51x51p22	51x51 dot matrix Angle: 22°x22° @ 635 nm Projection size in 100 mm: 39 x 39 mm	ZM12 ZM18 ZX20
	101x101 dot matrix	101x101p5	101x101 dot matrix Angle: 5.2°x5.2° @ 660 nm Projection size in 100 mm: 9.1 x 9.1 mm	ZM12 ZM18 ZX20

*These illustrations serve as symbolic representation, the illustrations may differ from the original.

Parallel lines

	Product name	Article code	Product description	Compatible with
	5 parallel lines	5L6	5 parallel lines Angle: 6°x28.8° @ 635 nm Projection size in 100 mm: 10.4 x 51.2 mm	ZM12 ZM18 ZX20
	7 parallel lines	7L5	7 parallel lines Angle: 5°x7° @ 635 nm Projection size in 100 mm: 8.7 x 12.2 mm	ZM12 ZM18 ZX20
	3 parallel lines	3L6	3 parallel lines Angle: 6.2°x30.0° @ 660 nm Projection size in 100 mm: 10.8 x 56.6 mm	ZM12 ZM18 ZX20
	81 parallel lines	81L64	81 parallel lines Angle: 63.9°x50.2° @ 650 nm Projection size in 100 mm: 128.8 x 93.6 mm	ZM12 ZM18 ZX20
	15 parallel lines	15L24g	15 parallel lines Angle: 23.8°x28.2° @ 520 nm Projection size in 100 mm: 8.7 x 12.2 mm	ZM12 ZM18 ZX20
	5 parallel lines	5L17	5 parallel lines Angle: 17°x17° @ 635 nm Projection size in 100 mm: 29.9 x 29.9 mm	ZM12 ZM18 ZX20

Parallel lines

	Product name	Article code	Product description	Compatible with
	7 parallel lines	7L21	7 parallel lines Angle: 21.4°x21.4° @ 635 nm Projection size in 100 mm: 38 x 38 mm	ZM12 ZM18 ZX20
	11 parallel lines	11L30	11 parallel lines Angle: 30°x30° @ 635 nm Projection size in 100 mm: 54 x 54 mm	ZM12 ZM18 ZX20
	25 parallel lines	25L27	25 parallel lines Angle: 27°x27° @ 635 nm Projection size in 100 mm: 48 x 48 mm	ZM12 ZM18 ZX20
	21 parallel lines	21L7	21 parallel lines Angle: 7°x7° @ 635 nm Projection size in 100 mm: 12 x 12 mm	ZM12 ZM18 ZX20
	41 parallel lines	41L53	41 parallel lines Angle: 54.9°x42.6° @ 660 nm Projection size in 100 mm: 104.0 x 78.0 mm	ZM12 ZM18 ZX20
	65 parallel lines	65L18	65 parallel lines Angle: 18.4°x18.4° @ 635 nm (more intense middle line) Projection size in 100 mm: 32 x 32 mm	ZM12 ZM18 ZX20

Crosses

	Product name	Article code	Product description	Compatible with
	Cross	x2	Cross Angle: 2°x2° @ 645 nm Projection size in 100 mm: 3.4 mm	ZM12 ZM18 ZX20
	Cross	x5	Cross Angle: 5°x5° @ 635 nm Projection size in 100 mm: 9 mm	ZM12 ZM18 ZX20
	Cross	x10	Cross Angle: 10°x10° @ 635 nm Projection size in 100 mm: 18 mm	ZM12 ZM18 ZX20
	Cross	x15	Cross Angle: 15°x15° @ 635 nm Projection size in 100 mm: 26 mm	ZM12 ZM18 ZX20
	Cross	x30	Cross Angle: 36°x36° @ 635 nm Projection size in 100 mm: 66 mm	ZM12 ZM18 ZX20
	Cross	x45	Cross Angle: 45°x45° @ 635 nm Projection size in 100 mm: 83 mm	ZM12 ZM18 ZX20
	Cross	x60	Cross Angle: 60°x60° @ 635 nm Projection size in 100 mm: 116 mm	ZM12 ZM18 ZX20

*These illustrations serve as symbolic representation, the illustrations may differ from the original.

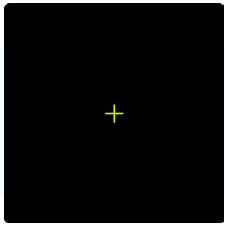
Crosses

Product name

Article code

Product description

Compatible with

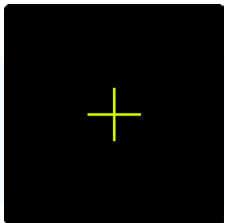


Cross

x5g

Cross
Angle: 5°x5° @ 520 nm
Projection size in 100 mm:
9 mm

ZM18-green
ZX20-green
ZD-green

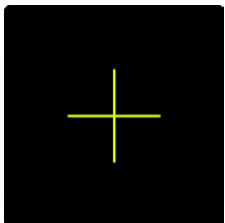


Cross

x15g

Cross
Angle: 15°x15° @ 520 nm
Projection size in 100 mm:
26 mm

ZM18-green
ZX20-green
ZD-green

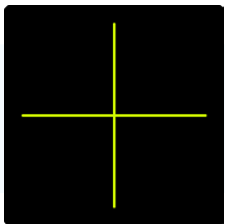


Cross

x25g

Cross
Angle: 25°x25° @ 532 nm
Projection size in 100 mm:
45 mm

ZM18-green
ZX20-green
ZD-green



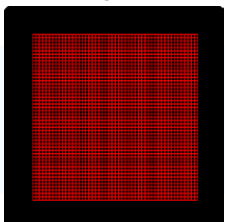
Cross

x52g

Cross
Angle: 52°x52° @ 515 nm
Projection size in 100 mm:
98 mm

ZM18-green
ZX20-green
ZD-green

Squares

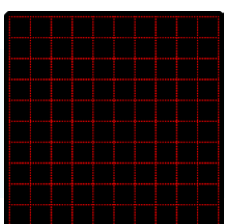


51x51 squares

51x51q23

51x51 squares
Angle: 22.6°x22.6° @ 635 nm
Projection size in 100 mm:
40 x 40 mm

ZM12
ZM18
ZX20



10x10 squares
(dotted lines)

10x10q40

10x10 squares
Angle: 40.0°x40.0° @ 658 nm
Projection size in 100 mm:
72.8 x 72.8 mm

ZM12
ZM18
ZX20

Dots arranged in a line

	Product name	Article code	Product description	Compatible with
	5 dots arranged in a line	5pl6	5 dots arranged in a line Angle: 6° @ 635 nm Projection size in 100 mm: 10.5 mm	ZM12 ZM18 ZX20
	9 dots arranged in a line	9pl0,85	9 dots arranged in a line Angle: 0.85° @ 635 nm Projection size in 100 mm: 1.5 mm	ZM12 ZM18 ZX20
	11 dots arranged in a line	11pl16	11 dots arranged in a line Angle: 16.1° @ 635 nm Projection size in 100 mm: 28.1 mm	ZM12 ZM18 ZX20
	19 dots arranged in a line	19pl13	19 dots arranged in a line Angle: 13.5° @ 635 nm Projection size in 100 mm: 23.5 mm	ZM12 ZM18 ZX20
	99 dots arranged in a line	99pl18	99 dots arranged in a line Angle: 18.4° @ 635 nm Projection size in 100 mm: 32 mm	ZM12 ZM18 ZX20

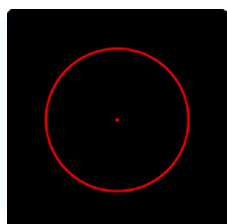
Geometric forms

Product name

Article code

Product description

Compatible with

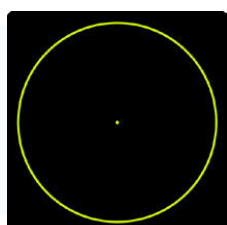


Circle

c34

Circle
Angle: 34° @ 635 nm
Projection size in 100 mm:
60 mm

ZM12
ZM18
ZX20

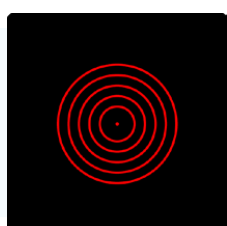


Circle

c45g

Circle
Angle: 45° @ 520 nm
Projection size in 100 mm:
83 mm

ZM18-green
ZX20-green

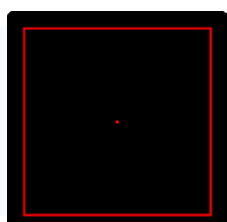


5 concentric circles

5c28

Concentric circles
Angle: 28.2° @ 635 nm
Projection size in 100 mm:
50.2 mm

ZM12
ZM18
ZX20



Square

q34

Square
Angle: 34.3° @ 635 nm
Projection size in 100 mm:
60 x 60 mm

ZM12
ZM18
ZX20

Dots in random pattern

	Product name	Article code	Product description	Compatible with
	33000-Dot Pseudo-Random (Design Wavelength 830 nm)	33kirp60	33000-Dot Pseudo-Random Number of dots: 33,000 Angle: 59.6 x 41.7° @ 830 nm Projection size in 100 mm: 114.6 x 76.3 mm	ZM12 ZM18
	33000-Dot Pseudo-Random (Design Wavelength 645 nm)	33krp45	33000-Dot Pseudo-Random Number of dots: 33,000 Angle: 45.9 x 31.5° @ 645 nm Projection size in 100 mm: 84.8 x 56.4 mm	ZM12 ZM18
	40100-Dot Pseudo-Random (Design Wavelength 850 nm)	40kirp60	40100-Dot Pseudo-Random Number of dots: 40,100 Angle: 59.7 x 39.6° @ 850 nm Projection size in 100 mm: 114.9 x 72.0 mm	ZM12 ZM18
	31806-Dot Truly-Random (Design Wavelength 830 nm)	31kirp61	31806-Dot Pseudo-Random Number of dots: 31,806 Angle: 61.3 x 47.0° @ 830 nm Projection size in 100 mm: 118.5 x 86.9 mm	ZM12 ZM18
	47708-Dot Truly-Random (Design Wavelength 830 nm)	47kirp61	47708-Dot Truly-Random Number of dots: 47,708 Angle: 61.3 x 47.0° @ 830 nm Projection size in 100 mm: 118.5 x 86.9 mm	ZM12 ZM18
	29594-Dot Truly-Random (Design Wavelength 830 nm)	29kirp61	29594-Dot Pseudo-Random Number of dots: 29,594 Angle: 61.3 x 46.8° @ 830 nm Projection size in 100 mm: 118.5 x 86.5 mm	ZM12 ZM18

Dots in random pattern

Product name	Article code	Product description	Compatible with
--------------	--------------	---------------------	-----------------

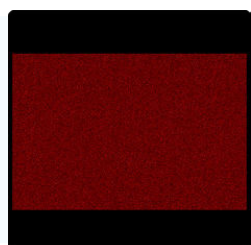


51978-Dot
Truly-Random
(Design Wavelength
640 nm)

51krp52

51978-Dot Truly-Random
Number of dots: 51,978
Angle: 52.0 x 66.2° @ 640 nm
Projection size in 100 mm:
97.5 x 130.4 mm

ZM12
ZM18



101050-Dot
Truly-Random
(Design Wavelength
640 nm)

101krp53

101050-Dot Truly-Random
Number of dots: 101,050
Angle: 53.3 x 67.6° @ 640 nm
Projection size in 100 mm:
100.4 x 133.9 mm

ZM12
ZM18

Laser targeting goggles

Laser target glasses for better visibility of laser projections on light and dark surfaces.



NOT suitable as laser safety goggles!



LZB red

LZB

Laser targeting goggles for
red lasers

ZM12
ZM18



LZB green

LZB green

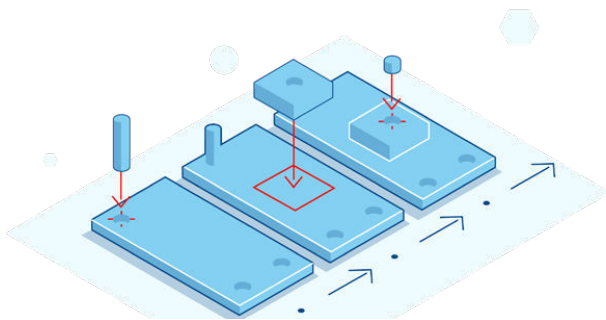
Laser targeting goggles for
green lasers

ZM12
ZM18

About Z-LASER

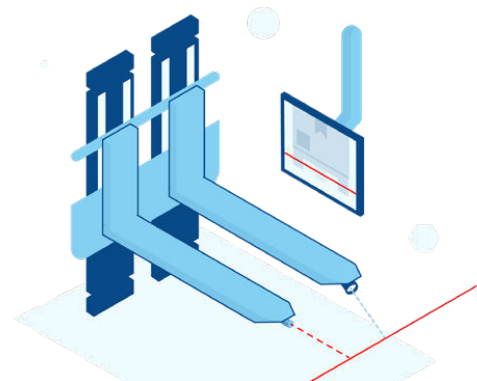
Z-LASER is a German manufacturer of laser sources for innovative customer applications. Over the past 30 years we have successfully established ourselves in the following areas:

- Laser as positioning aid (industry and trade)
- Lasers for image processing
- Laser projectors as positioning aids (industry and trade)
- Customer-specific lasers (OEM laser solutions)



Intelligent technologies

Our intelligent systems – consisting of mechanics, electronics, and optics – allow a high coverage of all customer requirements and contribute to a clear differentiation from competitors. Numerous patents and utility models have been successfully registered in recent years.



Innovations for the future

Today, the company is also successful in many new, innovative industries that demand advanced laser technologies and designs.

„Quality is when
customers return to us
- not lasers.“

- Kurt-Michael Zimmermann,
Founder Z-LASER GmbH

Quality policy & mission statement

Quality starts with the conversation with the customer. His wishes, needs and expectations determine our entrepreneurial actions. We constantly rethink our activities. Misunderstandings should be avoided and the products and services should meet the customer's quality requirements. Every employee from all areas and in all activities is responsible for quality. This quality cannot be checked, therefore it is consistently produced by us.

Supplier policies

Z-LASER is a socially responsible company that is committed to the well-being of people and the environment. Compliance with ethical principles and legally binding regulations is a matter of course for us.



We see it as our duty to carry out our business activities accordingly and expect our suppliers to do the same. For this reason, we demand REACH and RoHs conformity from supplied products as well as articles and the avoidance of conflict materials as far as possible.



Z-LASER generates a considerable part of its energy requirements via its own solar system and thus makes an active contribution to climate protection.

Don't hesitate to contact us!

Z-LASER



Stefan Frei
Sales Manager
Positioning Lasers

✉ frei@z-laser.de
☎ +49 (0)761 296 44-309



V-Card



Michael Utz
Sales
Positioning Lasers

✉ utz@z-laser.de
☎ +49 (0)761 296 44-303



V-Card

„Quality is when customers return to us
- not lasers.“

- Kurt-Michael Zimmermann,
Founder Z-LASER GmbH

Our mission is to develop laser sources and laser projectors of the highest quality for our customers. Since founding Z-LASER in 1985 in Freiburg, we supply the industry with top functional and easy-to-use laser systems.

Z-LASER is a socially responsible company that cares about the well-being of people and its environment. A significant part of the energy requirement is gained through the in-house solar system. Furthermore, we only supply civil applications.

Lasertechnology
from Freiburg
made in Germany

Contact us.
We would be happy
to advise you!



Z-LASER GmbH
Merzhauser Str. 134
D-79100 Freiburg

+49 761 296 44-44
info@z-laser.de
www.z-laser.de

