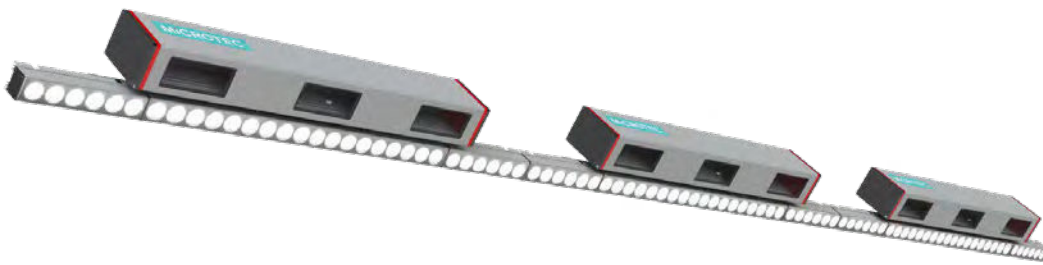


# Logeye 900 Stereo

Stereoscopic True Shape Scanner for logs  
Unique in transverse transport



## Logeye 900 Stereo

- × Real shape reconstruction during rolling into the carriage
- × Efficient, modular solution
- × Increase of throughput speed
- × Easy operation on the bandsaw

# A true revolution in carriage scanning

The Logeye 900’s stereoscopic imaging system is worldwide the only scanner that provides a full 360-degree scan of a log as it’s rolling into the Carriage, Headrig, or End dogger. Since the scanning takes place as it’s transferred into the position, the log is already fully optimized and ready for sawing the instant it is dogged.

This leads to higher throughput speed and vastly improved recovery, as the entire surface of the log is imaged without shadows or occlusions. The scanner is also able to detect the current rotation of the log at any point in the process, allowing full rotation optimization and turn correction. This feature was previously only possible on lineal log scanning lines.

**Production Applications**

**Sawmill**

- × Headrig carriages
- × End doggers
- × Short coupled infeeds

“The Logeye alone gives us about 5% more cutting performance.”

**Pfeifle Holz, Germany**



Touchscreen display for band saw control



**Direct connection to cutting optimization and cutting line visualization software possible**

Combined with Maxicut, sawing optimization is fully integrated into the scanning system, providing unparalleled pattern optimization. When paired with MiCROTEC’s unique Optiline system, the optimized pattern is overlaid on the live video of the log as it’s being sawn to assist the sawyer in breakdown

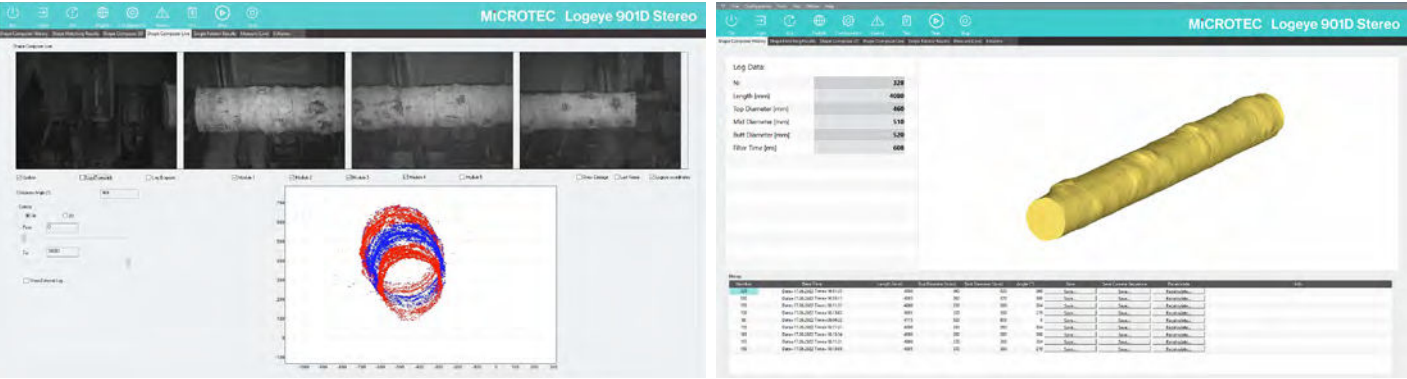
decisions and provide complete transparency of the optimized solution. The video of the top and butt end of the log is displayed in 5K.

**Easy operation**

The operability of the bandsaw is significantly simplified by the use of the Logeye 900 stereo.



Case Study Video Review  
**Gruber Holz - South Tyrol, Italy**



Logeye 900 Stereo	Features
Technology	stereoscopy
Log length	modular (each module can measure up to 1500 mm and can be combined)
Log diameter	up to 1400 mm





# World leading wood scanning solutions

**MiCROTEC**

Julius-Durst, 98  
39042 Bressanone / Brixen  
Italy

T + 39 0472 273 611

[info@microtec.eu](mailto:info@microtec.eu)

[microtec.eu](http://microtec.eu)

The information contained in this catalog may be  
subject to technical changes and modifications.  
© MiCROTEC - All rights reserved. 06/2022

